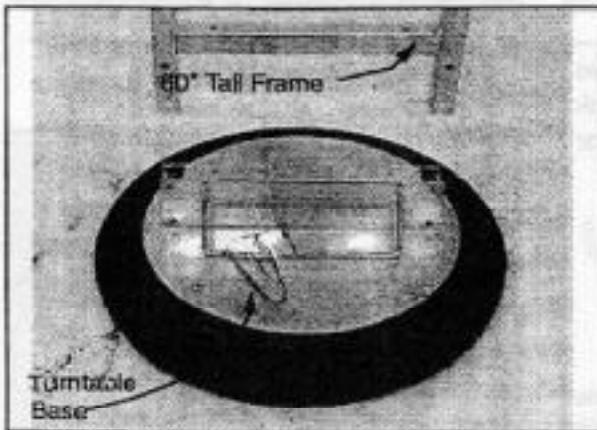


# FLOOR STAND ❖❖❖FINISH LINE❖❖❖

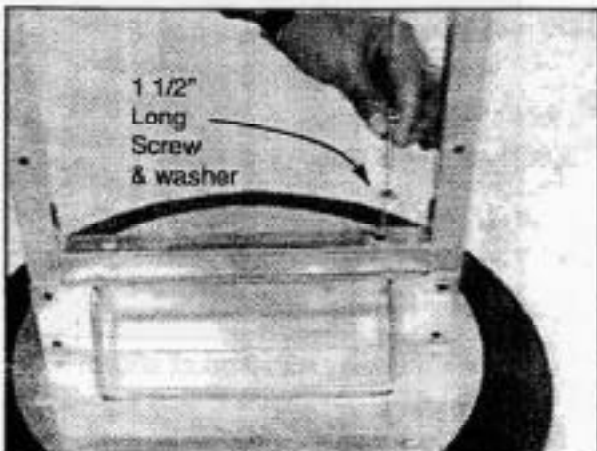
## **DISPLAY CONTENTS**

- 1 - Turntable Base
- 1 - 60" Tall Frame
- 2 - Triple Hook Bars
- 1 - Double Hook Bar
- 1 - Two-piece Header
- 10 - 1 1/2" Long Screws
- 8 - Washers & Hex Nuts
- 3 - Lube Shelves
- 2 - De-Grease Shelves
- 1 - Bike Wash Shelf
- 1 - Literature Pocket

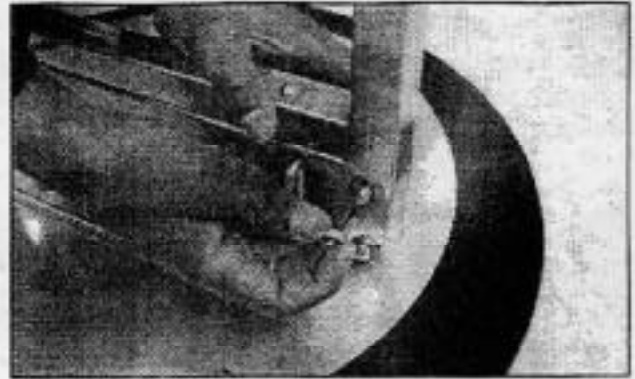
## **ASSEMBLY INSTRUCTIONS**



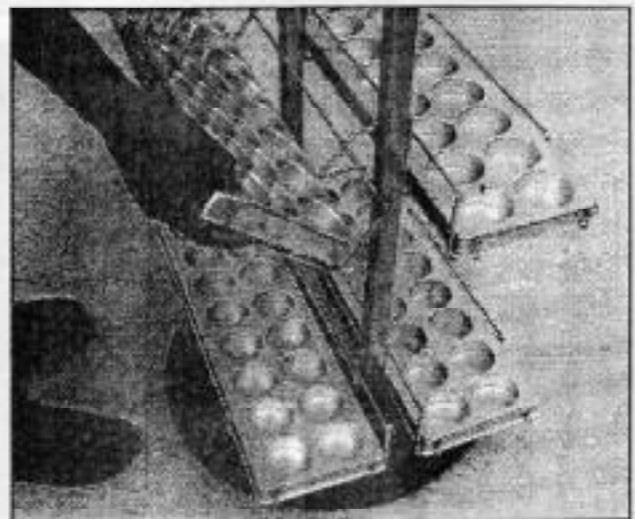
1. Unpack Turntable Base and place on floor. Insert 60" tall frame into base and press down all the way.



2. Fasten 60" metal Frame to Base with (2) two 1 1/2" long screws and washers.



3. Install four 1 1/2" long screws through metal base and frame then secure with hex nuts & washers.



4. Install shelves by hooking shelf into holes in 60" Metal Frame.

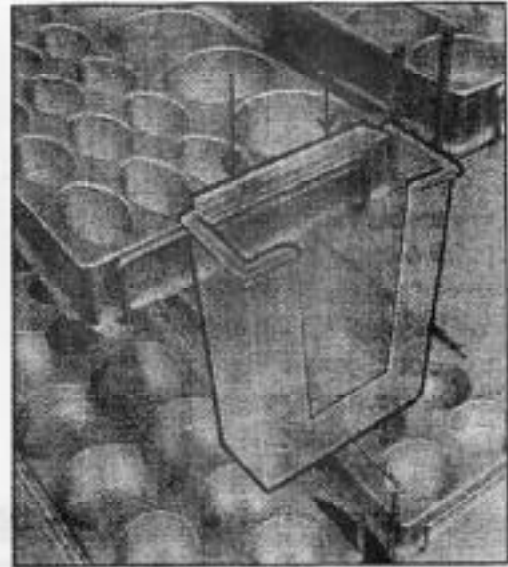
<u>Top Level</u>	(1) Teflon - Plus Shelf (1) Cross Country - Krytech Shelf
<u>Middle Level</u>	(1) Degrease shelf (1) Cross Country - Krytech Shelf
<u>Bottom Level</u>	(1) Bike Wash shelf (1) Degreaser shelf

**Never Relocate A Loaded Display**

## FLOOR STAND

QUAT FINISH LINE

5. With header panels back to back, insert the (3) flaps\* on each side into the slots.



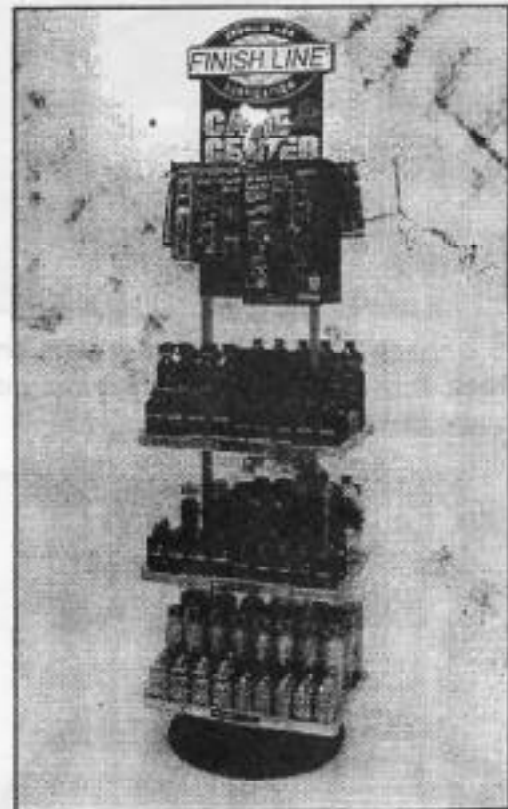
9. Install a brochure pocket over the wire on the side of a shelf as shown.



6. Take assembled header and fold the small flap on each side under as shown. Rest header onto top of frame.

7. With two 1 1/2" long screws install a "triple" hook bar through the upper set of holes on the header panel. Pass the screw all the way through both sides of the header exposing the threads on the other side. Then install the other "triple" hook bar over these screws and secure with hex nuts (no washers needed here).

8. Install the "double" hook bar with two 1 1/2" screws through the lower holes found on the header. Use the hex nuts & washers to secure it in place.



Loaded display with product shown here

**Never  
Relocate  
A Loaded  
Display**